

LULA ELEVATOR SHOP DRAWINGS

PROVISIONS BY OTHER CONTRACTORS

IMPORTANT

- THE FOLLOWING SHOULD BE SUPPLIED BY THE OWNER OR HIS AGENT
1. HOISTWAY AND MACHINE ROOM IN ACCORDANCE WITH ELEVATOR, SAFETY AND BUILDING CODES.
 2. HOISTWAY VENTING AND FIRE RATING ACCORDING TO LOCAL CODE REQUIREMENTS.
 3. PLUMB HOISTWAY WITH VARIATIONS NOT TO EXCEED 25mm ALL LEDGES OVER 100mm TO BE BEVELLED 75° TO THE HORIZONTAL.
 4. NECESSARY REMOVABLE BARRICADES OUTSIDE OF HOISTWAY.
 5. NO CONDUIT, WIRING, OR PIPING OTHER THAN THAT PERTAINING TO ELEVATOR(S) IS PERMITTED IN THE HOISTWAY OR MACHINE ROOM.
 6. MACHINE ROOM TO BE LOCATED AT THE LOWEST LANDING ADJACENT TO THE HOISTWAY, UNLESS OTHERWISE SHOWN.
 7. PROVIDE A SELF-CLOSING, SELF-LATCHING, FIRE RATED MACHINE ROOM DOOR MINIMUM 2030mm HIGH. MINIMUM MACHINE ROOM HEIGHT TO BE 2286mm CLEAR BELOW ALL EQUIPMENT.
 8. HEATING AND COOLING THERMOSTATICALLY CONTROLLED TO MAINTAIN MACHINE ROOM TEMPERATURE OF 10°C TO 32°C. RELATIVE HUMIDITY CONTROLLED TO ENSURE NO CONDENSATION.
 9. 120 VAC LIGHT FIXTURE(S), SWITCH AND GFI CONVENIENCE OUTLET IN EACH PIT AND MACHINE ROOM, MINIMUM 200lx LIGHTING LEVEL IN MACHINE ROOM. SWITCH TO BE ON THE LOCK JAMB SIDE OF THE DOOR. MINIMUM 100 lx LIGHTING LEVEL IN THE PIT. PIT LIGHT TO BE SUPPLIED WITH GUARD. ALL CONDUIT IN MACHINE ROOM AND HOISTWAY TO BE EMT.
 10. ELEVATOR FEEDERS INCLUDING LOCKABLE, FUSED DISCONNECT CIRCUIT BREAKERS WIRED TO OUR CONTROLLER.
 11. ADEQUATE SUPPORT FOR GUIDE RAIL FASTENING TO BE PROVIDED AT GUIDE RAIL BRACKET LOCATIONS. SEE DETAIL "D", "E" AND "G". INSERTS SUPPLIED BY DELTA, INSTALLATION BY CONTRACTORS. RAIL FORCE LOADS DOUBLED FOR SAFETY.
 12. ALL BLOCKOUTS, UNDERPINNING, POCKETS, PATCHING, GROUTING AND CONCRETE WORK WHERE REQUIRED.
 13. ENTRANCE WALLS (ROUGH OPENINGS) TO BE ERECTED AFTER ENTRANCE FRAMES HAVE BEEN INSTALLED. FINISH MASONRY AND GROUT IN SADDLES FULL LENGTH.
 14. ENTRANCE FRAMES ARE NOT DESIGNED TO SUPPORT OVERHEAD WALL LOADS. SUITABLE SUPPORTS FOR THESE LOADS MUST BE PROVIDED.
 15. N/A, 16. N/A, 17. N/A
 18. SLEEVES FOR OIL AND ELECTRIC DUCTS FROM MACHINE ROOM TO HOISTWAY AS REQUIRED.
 19. CONTROLLER AND PUMPING UNIT PLACEMENT SUBJECT TO JOB CONDITIONS.
 20. PIT WATERPROOFING, WHERE REQUIRED.
 21. PIT DRAIN ALWAYS REQUIRED FOR ELEVATORS WITH FIREFIGHTER'S EMERGENCY OPERATION. SUMP PUMP EXTERNAL TO THE SHAFT, WHERE REQUIRED. SUMP HOLE TO BE OUTSIDE HOISTWAY AND 600mm DEEPER THAN PIT, WITH TRAP & BACKWATER CHECK VALVE. DESIGN TO HANDLE POSSIBLE OIL IN SUMP DISCHARGE.
 22. PROVIDE TELEPHONE CONNECTION EXCEPT FOR THE WIRE FROM THE CONTROLLER IN THE MACHINE ROOM TO ELEVATOR.
 23. A CHEQUE FROM THE OWNER TO COVER THE FIRST YEAR'S LICENSING FEE MUST BE SUPPLIED AT THE TIME OF INSPECTION.
 24. ELEVATORS WITH PHASE I EMERGENCY RECALL OPERATION BY FIRE ALARM INITIATING DEVICES REQUIRE A SMOKE DETECTOR INSTALLED IN THE ELEVATOR LOBBY AT THE DESIGNATED LEVEL, IF THAT FLOOR AREA IS NOT SPRINKLERED THROUGHOUT; AND A SMOKE DETECTOR INSTALLED IN THE MACHINE ROOM IF THE MACHINE ROOM IS SPRINKLERED. WIRING TO CENTRAL ALARM CONTROL FACILITY (CACF) BY OTHERS.
 25. WHERE AN EMERGENCY OR STANDBY POWER SYSTEM IS PROVIDED TO OPERATE AN ELEVATOR IN THE EVENT OF NORMAL POWER SUPPLY FAILURE, THEN A "NORMALLY OPEN" DRY CONTACT IS TO BE PROVIDED FROM THE EMERGENCY POWER TRANSFER SWITCH AND WIRED TO THE ELEVATOR CONTROLLER, CAR 'A', TO CLOSE WHEN EMERGENCY OR STANDBY POWER IS IN EFFECT.
 26. N/A

TECHNICAL DATA

GENERAL	CAPACITY		635 kg
	SPEED UP/DOWN		0.13 m/s
MOTOR	TRAVEL		MAXIMUM 9000m
	LANDINGS		MAXIMUM 7
	OPENINGS		FRONT/ REAR/
	OPERATION		SINGLE AUTOMATIC
TANK	POWER SUPPLY	220V-1PH-60HZ	208V-3PH-60HZ
	MOTOR CURRENT	20.7A	15.2A
	MOTOR POWER	3.7KW	3.7KW
	FUSING (BY OTHERS)	25A	17.5A
SHAFT	PUMP UNIT TYPE	} JOB SPECIFIC	
	VALVE TYPE		
	WORKING PRESSURE		
	RELIEF PRESSURE HEAT GENERATED		
CAR	RAILS	11.9 kg/m	
	MAX. BRACKET SPACING	1500 mm	
JACK	EMPTY CAR MASS (EST)	}	
	PLUNGER OD PLUNGER WALL PLUNGER LENGTH CYLINDER OD CYLINDER WALL CYLINDER LENGTH HYDRAULIC JACK MASS		
HYD.	HOSE TYPE	}	
	BURST PIPE SIZE		
ROPING	ROPING	}	
	WIRE HOIST ROPE		
	BREAKING STRENGTH GOVERNOR ROPE		
	GOVERNOR TRIP SPEED		

THIS ELEVATING DEVICE IS ENGINEERED AND MANUFACTURED BY DELTA ELEVATOR FOR THE ALLIED ELEVATOR GROUP OF COMPANIES. WWW.DELTA-ELEVATOR.COM

THE FOLLOWING STATEMENT TO BE SIGNED BY CONTRACTOR, ENGINEER OR ARCHITECT RESPONSIBLE FOR THE PROJECT:

"SUPPORTING STRUCTURE AND BUILDING WILL SAFELY SUPPORT ALL LOADS APPLIED BY THE ELEVATING DEVICE AS INDICATED ON THIS DRAWING"

SIGNED _____ DATE _____

COMPANY _____

1	UPDATED MODEL MAIN LAYOUTS/	LR	March 2007
REV.No	DESCRIPTION	BY	DATE



DELTA ELEVATOR CO. LTD.
509 MILL STREET
KITCHENER, ON
N2G 2Y5
PHONE: (519) 745-5789
FAX: (519) 745-7587
www.delta-elevator.com

OFFICES IN KITCHENER, MISSISSAUGA AND OWEN SOUND
MEMBER OF THE CANADIAN ELEVATOR CONTRACTORS ASSOCIATION

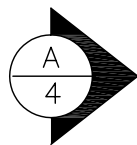
TITLE: NEW INSTALLATION – LULA ELEVATOR			
APPLICABLE CODE: B44-00U1-02	DR'N	AP'VD	SCALE NTS
INSTALLATION ADDRESS:	DWG. NO.	DATE	
	SALES NO.	SHEET 1 OF 5 REV. 2	

DRAWING: **TECHNICAL DATA**

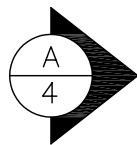
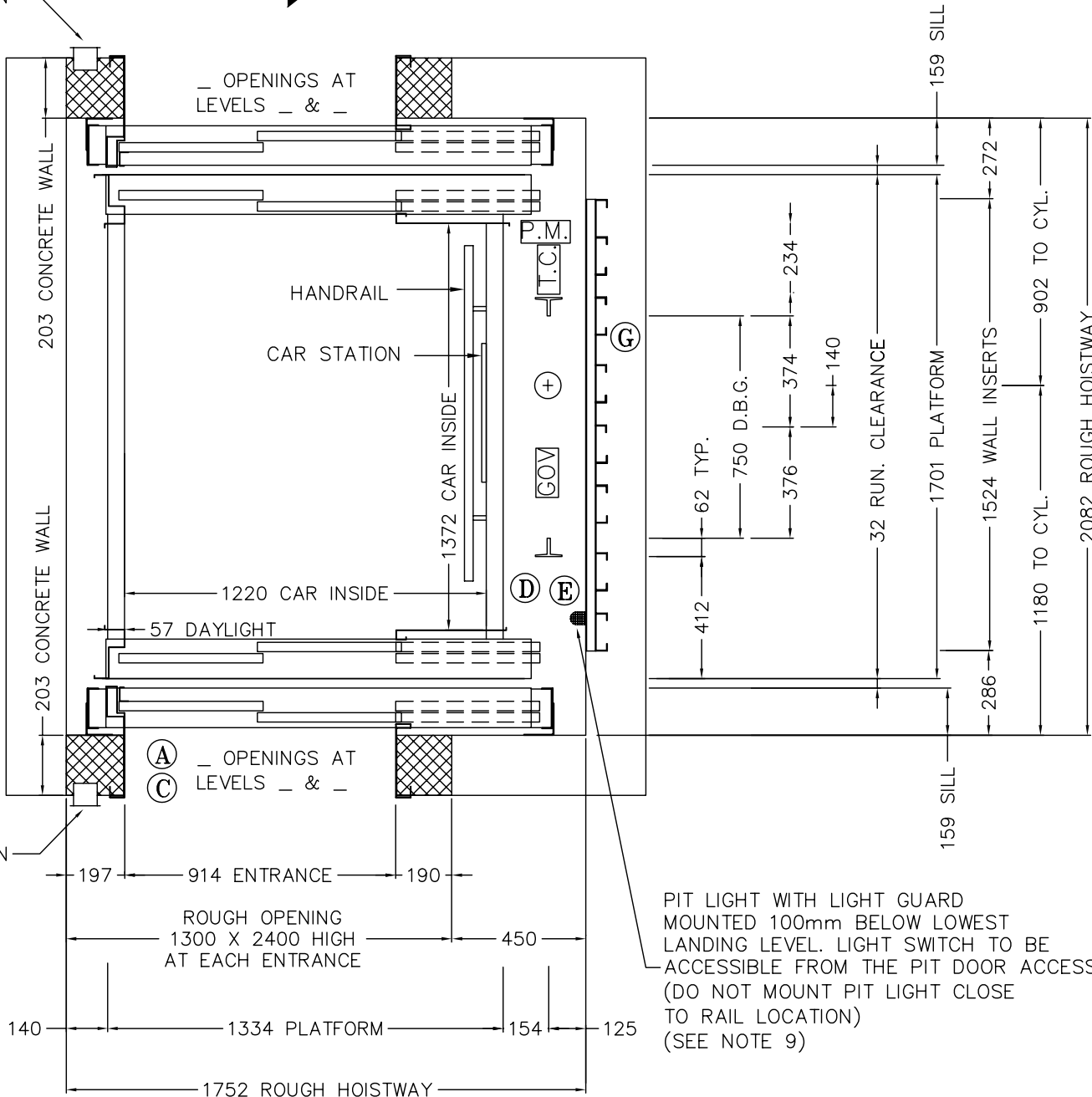
LULA ELEVATOR SHOP DRAWINGS

MODEL LU4854R

NOTE:
CONSULT LOCAL
BUILDING CODE
BARRIER FREE ACCESS
REQUIREMENTS WITH
REGARDS TO MINIMUM
CODE CLEARANCES IN
FRONT AND TO THE
SIDE OF ENTRANCES.



HALL STATION



DELTA
ELEVATOR

DELTA ELEVATOR CO. LTD.
509 MILL STREET
KITCHENER, ON
N2G 2Y5
PHONE: (519) 745-5789
FAX: (519) 745-7587

www.delta-elevator.com

OFFICES IN KITCHENER, MISSISSAUGA AND OWEN SOUND
MEMBER OF THE CANADIAN ELEVATOR CONTRACTORS ASSOCIATION

TITLE: NEW INSTALLATION — LULA ELEVATOR

APPLICABLE CODE: B44-00U1-02

DR'N

AP'VD

SCALE NTS

INSTALLATION ADDRESS:

DWG. NO.

DATE

SALES NO.

SHEET 2 OF 5

REV. 2

DRAWING:

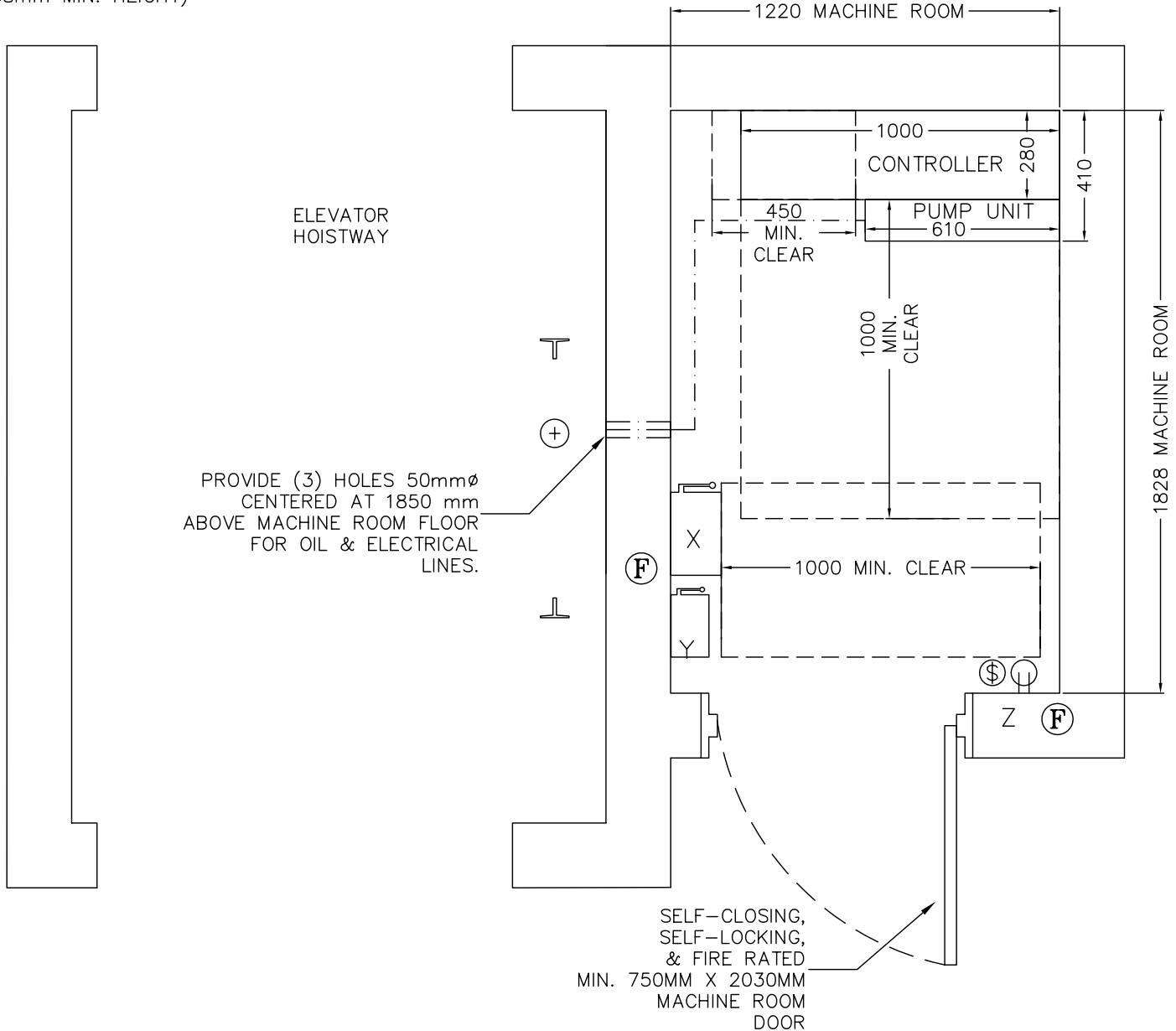
HOISTWAY PLAN VIEW

LULA ELEVATOR SHOP DRAWINGS

PREFERRED
MACHINE ROOM SIZE.

FOR SMALLER
MACHINE ROOM SIZE OR
REMOTE LOCATIONS,
CONSULT DELTA.

LOCATION:
AT LOWEST LANDING
BESIDE HOISTWAY AT RAIL
SIDE.
(2288mm MIN. HEIGHT)



MACHINE ROOM
LOCATED AT LEVEL "1"
(2288MM MIN. HEIGHT)



DELTA ELEVATOR CO. LTD.
509 MILL STREET
KITCHENER, ON
N2G 2Y5
PHONE: (519) 745-5789
FAX: (519) 745-7587
www.delta-elevator.com

OFFICES IN KITCHENER, MISSISSAUGA AND OWEN SOUND
MEMBER OF THE CANADIAN ELEVATOR CONTRACTORS ASSOCIATION

TITLE: NEW INSTALLATION - LULA ELEVATOR

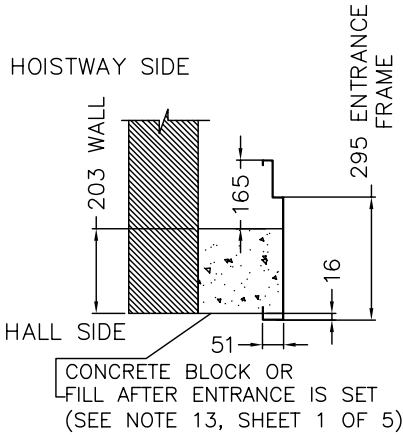
APPLICABLE CODE: B44-00U1-02	DR'N	AP'VD	SCALE NTS
INSTALLATION ADDRESS:	DWG. NO.	DATE	
	SALES NO.	SHEET 3 OF 5 REV. 2	

DRAWING: MACHINE ROOM PLAN VIEW

LULA ELEVATOR SHOP DRAWINGS

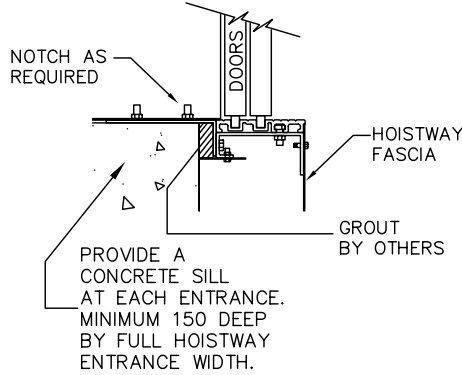
DETAIL (A)

ENTRANCE DOOR JAMB



DETAIL (B)

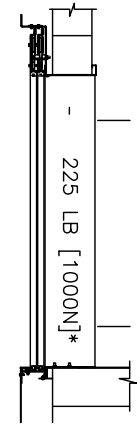
DOOR SILL



DETAIL (C)

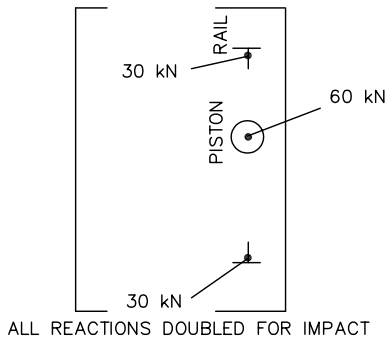
TYPICAL ENTRANCE FRAME LOADING ON BUILDING STRUCTURE

*NOTE: THE MAXIMUM STATIC DOOR FORCES ON THE BUILDING STRUCTURE (TYP. EACH LANDING)



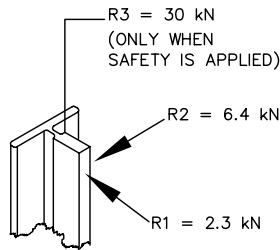
DETAIL (D)

DIAGRAM FOR PIT REACTIONS



DETAIL (E)

MAXIMUM FORCES ON GUIDE RAILS



NOTE: RAIL BRACKET SUPPORT MAX. DEFLECTION IS 3mm (SEE NOTE 11)

DETAIL (F)

MACHINE ROOM ELECTRICAL EQUIPMENT (BY OTHERS)

(SEE NOTE 9 & 10; ALSO SEE SECTION 38 OF THE ELECTRICAL CODE)

- X MAIN DISCONNECT SWITCH FUSED WITH 25 A TYPE D FUSE (220V 1PH) OR 17.5 A TYPE D FUSE (208V 3PH) AND WITH AN AUXILIARY CONTACT THAT IS POSITIVELY OPENED MECHANICALLY, THE OPENING NOT BEING SOLELY DEPENDENT ON SPRINGS.
 - Y CAR LIGHT DISCONNECT SWITCH. 120V-1PH-15A FUSED (DEDICATED CIRCUIT REQUIRED)
 - Z LIGHT SWITCH AND GROUND FAULT INTERRUPT DUPLEX RECEPTACLE (DEDICATED CIRCUIT REQUIRED)
- NOTE: ANOTHER DEDICATED CIRCUIT IS REQUIRED FOR THE PIT LIGHT AND RECEPTACLE PROVIDE A BUILDING GROUND WITH A DEDICATED CONDUCTOR, WIRED TO THE ELEVATOR CONTROLLER AND SIZED ACCORDING TO THE APPLICABLE ELECTRICAL CODE.

DETAIL (G)

SUGGESTED WALL INSERT INSTALLATION

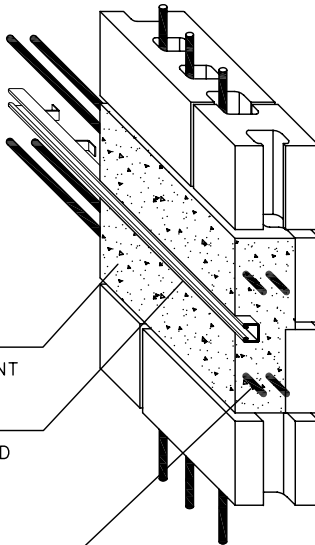
1. BREAK OUT AT LEAST HALF OF CONCRETE BLOCKS FOR A MINIMUM HEIGHT OF TWO BLOCKS
2. WALL INSERTS TO BE LOCATED AT ELEVATIONS OF RAIL BRACKETS SHOWN AND ON THE RAIL SIDE OF THE HOISTWAY, HORIZONTALLY SPACED AS SHOWN.

NOTE: A SOLID CONCRETE BAND CAN BE USED INSTEAD OF BREAKING OUT BLOCKS.

POURED CONCRETE MUST EXTEND AT LEAST 100MM (4") PAST THE END OF THE ADJACENT WALL.

UNISTRUT P3270 SERIES WALL INSERT(S) (PROVIDED BY DELTA), SHOULD BE INSTALLED LEVEL AND FLUSH WITH HOISTWAY WALL. (INSERTS CAN BE NAILED DIRECTLY ONTO CONCRETE FORMS).

RE-BARS: QUANTITY AND LOCATION BY BUILDING ARCHITECT OR ENGINEER



THE ELEVATING DEVICES CODE REQUIRES THAT THE BUILDING CONSTRUCTION FORMING THE SUPPORTS FOR THE GUIDE RAIL AND GUIDE RAIL BRACKETS SHALL BE DESIGNED TO WITHSTAND THE FORCES AS INDICATED ON THIS DRAWING. THE CONTRACTOR SHALL ENSURE THAT THE APPROPRIATE PROFESSIONAL (ARCHITECT AND/OR ENGINEER) REVIEW THE INDICATED FORCES TO ENSURE THAT THE BUILDING DESIGN AND CONSTRUCTION MEETS ALL REQUIRED CODES.



DELTA ELEVATOR CO. LTD.
509 MILL STREET
KITCHENER, ON
N2G 2Y5
PHONE: (519) 745-5789
FAX: (519) 745-7587

www.delta-elevator.com

OFFICES IN KITCHENER, MISSISSAUGA AND OWEN SOUND
MEMBER OF THE CANADIAN ELEVATOR CONTRACTORS ASSOCIATION

TITLE: NEW INSTALLATION - LULA ELEVATOR

APPLICABLE CODE: B44-00U1-02 DR'N AP'VD SCALE NTS

INSTALLATION ADDRESS: DWG. NO. DATE

SALES NO. SHEET 5 OF 5 REV. 2

DRAWING: HOISTWAY DETAILS